

YOUTH WORKER INTAKE 2022 KEY DATES

INTERVIEWS

You will select an available time from one of the dates below for an interview with the YDP coordinator.

Interviews take approximately 30 - 40 minutes.

Interview day option 1
Interview day option 2
Interview day option 3
Interview day option 4
Interview day option 6
Interview day option 7
Interview day option 8

Mon 31st Jan
Tue 1st Feb
Wed 2nd Feb
Thu 3rd Feb
Tue 8th Feb
Wed 9th Feb
Thu 10th Feb

PERSONAL DEVELOPMENT WEEKEND

Both days run from 10AM - 4PM

Personal Development Weekend DAY 1
Personal Development Weekend DAY 2

Sat 19th Feb
Sun 30th Feb

FORMAL TRAINING

All training sessions run from 10AM - 4PM. The order of the topics below are subject to change due to speaker availability.

YDP and Level 3 Youth Work induction
Mana Taiohi and Youth Work Code of Ethics
Strengths-based communication and dealing with disclosures
Responding to risks of harm
Rainbow youth and ethnic communities and diversity
Mātauranga Māori and disability
Facilitation skills and preparation for session one

Sat 5th Mar
Sat 12th Mar
Sat 19th Mar
Sat 2nd Apr
Sat 9th Apr
Sat 23rd Apr
Sat 30th Apr

WHAKANUI (Celebration)

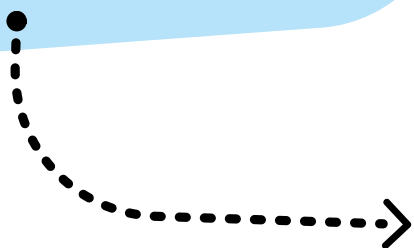
Date TBC

YOUTH WORKER ONBOARDING PROCESS

Interviews

17th Jan - 21st Jan

Have an interview with the YDP Coordinator.

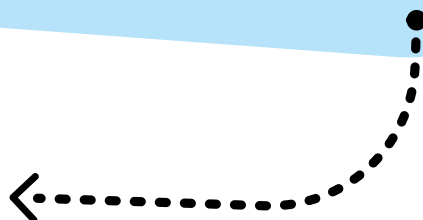


You must be invited to the next stage, Personal Development Weekend.

Personal Development Weekend

19th Feb - 20th Feb

Connect with other Youth Worker applicants, explore and share your experiences and vulnerabilities, reflect on your journey and create a self-care plan.

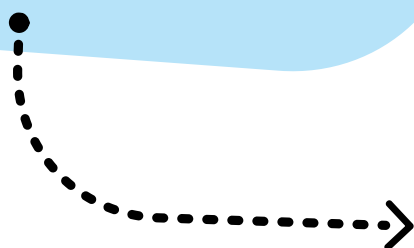


You must be invited to the next stage, Formal Training.

Formal Training

5th March - 30th April

Seven sessions that are focused on topics specific to Youth Work and the Youth Development Programme.



Whakanui (Celebration!)

Date TBC

An evening to celebrate your amazing mahi so far!